

BEYOND STEPHENS



ISSUE 4

SPRING | SUMMER | 2013

Rejuvenate. Refresh. Restore.



2
3
5
21



4
6
8
10



12
13
17

in this issue

FROM DIANNE

Stephens President Dianne Lynch guides you through your magazine.

A CLOSER LOOK

Stephens College by the numbers!

STEPHENS QUIZ

How much do you know about Stephens?

A STEPHENS SNAPSHOT

Our award-winning literary magazine, then and now.

departments

POINT OF VIEW

Party perfection: The secret is in the planning.

FOOD

Fresh, family-centered and full of surprises: A farmers market guide with **Heather Hunter '89**.

ENTERTAINING

Seriously succotash: Savor simple summer recipes with chef **Samantha Enzmann '90**.

HEALTH

Spring cleaning: Not just about housework anymore...

STYLE

Fresh spring ideas: **Linda Daugherty Saunders '81** and her team at Lancôme USA share new makeup trends.

A & E

Helen Lewis Moore '77 and the Queen of Hearts entertain with story and song.

Mara McEwin '95 and **Emily Bunning '95** hatch innovative youth theatre.

NEWS & NOTES

Dr. Judith Clark Marches Toward Retirement * The Many Facets of Nikki Krawitz
Remembering **Frances Gruppe Gates '46** * Remembrances

FROM DIANNE



In March, fashion industry experts converged on the Stephens campus for our annual Jury of Selection and a lecture series. Pictured (L-to-R): **Kerry Bocker '82**, regional sales director, Charming Shoppes; **Carol Olsen Foley '55**, designer/sales, Fabrique; **Lisa DeToro Pasternak '83**, fashion design engineer, Monterey Mills; **Monica Phillippe McMurry '82**, dean of the School of Fashion & Design; Stephens President Dianne Lynch; **Wendy Manasse Weiss '81**, designer/founder, Quenchwear; and **Ann Ryan Solomon '80**, founder/editor/writer, Executive Communications Solutions.

Dear Stephens Reader,

You hold in your hands the most beautiful issue to date of our new *Beyond Stephens* magazine, a celebration not only of the renewal of spring but of the talents, wisdom and style of Stephens women—from **Christie Lee '13**, our cover model, to Trustee Nikki Krawitz, who is retiring this spring from her position as Vice President for Finance and Administration at the University of Missouri System. We are excited to share that Nikki recently received Columbia's 2013 Athena Award for her professional excellence, community service and assistance in helping other women attain professional excellence and leadership skills.

Consistent with our commitment to produce for you an alumnae magazine you actually want to read, we've reached out to bring you expert advice on everything from fresh-face cosmetics tips to making the most of your local farmers market. We introduce you to three very special Stephens women who have created exciting and successful careers in the entertainment industry, one in the heart of the country and the other two in the classrooms and youth theatres of New York City.

And we encourage you to do a little spring cleaning—both inside and out. In the spirit of acknowledging that we all teach best what we most need to learn, this season's *Beyond Stephens* urges you to stop, exhale and take a moment to care for the most important person in your life: You. Drawing on the advice and insight of experts, our spring cleaning story suggests you add another kind of spring ritual to your calendar—one that refreshes and restores your health, attitude and peace of mind.

Enjoy!

Dr. Dianne Lynch
Stephens College President

Beyond Stephens Spring/Summer 2013 Vol. 3, No. 1

Beyond Stephens, published twice a year, is for alumnae and friends of Stephens College.

Download *Beyond Stephens* with your e-reader!
www.stephens.edu/beyondstephens

Editor

Rebecca Kline
Director of Marketing and Communications

Managing Editor/Writer

Sarah Berghorn
Communications Coordinator

Writer

Janese Silvey
Story Specialist/Strategist

Art Director/Designer

Jennifer Cropp
Graphic Designer

Photographer

Corey Ransberg
Multimedia Producer

Published by:

Office of Marketing & Communications
Stephens College
Columbia, MO 65215
(573) 876-7111
scnews@stephens.edu

Office of Philanthropy

Marissa Todd, M.B.A. '10
Director of Alumnae Relations and Philanthropy

Send address changes and story ideas to:

Office of Philanthropy
Stephens College
1200 E. Broadway
Columbia, MO 65215
(573) 876-7110
alumnae@stephens.edu

Or submit an online form:

www.stephens.edu/alumnae/forms/twocentsworth

Connect with us online



www.facebook.com/stephenscollege



[@stephenscollege](https://twitter.com/stephenscollege)



Search for the "Stephens College" group:
www.linkedin.com



pinterest.com/stephenscollege



Starring Stephens blog:
www.stephens.edu/starringstephens

ABOUT THE COVER:

Pictured: **Christie Lee '13**, who is studying Marketing: Public Relations and Advertising at Stephens College.
Photographer: **Corey Ransberg**



A CLOSER LOOK

A quick dose of Stephens stats, facts and random tidbits...



2ND

Place fashion student **Melinda Thiedig '14** snagged in the national Design-A-Throw Competition sponsored by Denali Home Collection. For her Army boot and flag-themed design, she received a \$500 cash prize and some bragging rights: More than 200 college students from across the country entered the competition.



43

Number of years of fashion spanned in our Historic Costume Gallery's exhibit "Emergence: Winter Shades to Spring." Two shows in one, the show lets visitors experience the emergence of spring through one imaginary socialite's closet as it evolved from 1947 to 1990. At the beginning of the exhibit, the collection consisted of winter wear: White, silver, taupe suits and heavy garments. Like any woman, our muse swapped out her winter pieces to make room for a spring wardrobe, consisting of lighter fabrics in pinks, greens and yellows. The exhibit is open through May 5.



89%

Season free-throw percentage of Stephens Star **Jess McConnell '13**, who ranked second in the nation for her shooting accuracy from the line. She also earned 2012-2013 Honorable Mention All-Conference honors, averaging 10 points and three assists per game. Over her entire collegiate basketball career, she scored 836 points. Off the court, McConnell received Academic All-Conference honors for maintaining a minimum GPA of 3.0; and recognition as a 2012-13 Daktronics-NAIA Scholar-Athlete, which honors students with a GPA of 3.5 or higher.



5 creativeink
always thinking.

Years of operation for Creative Ink, our student-run integrated marketing communications firm. Creative Ink selects the most creative and dedicated students for staff members.



900

Seconds in "ON IT! with *Stephens Life*," a new weekly newscast featuring the best news stories from the *Stephens Life* student newspaper website (www.stephens.edu/stephenslife). In the 15-minute broadcast, *Stephens Life* staff members re-purpose their written newspaper articles for broadcast, with topics ranging from campus news and seasonal tips to weather and entertainment. The show is produced live every Friday at 4 p.m. on Columbia Access Television from Studio A in the Helis Communication Center. Watch the newscast on YouTube.com (search for the "*Stephens Life Magazine*" channel.) Pictured above: **Lesley Nielsen '13** and **Olivia O'Dell '15** co-host the weekly broadcast "ON IT! with *Stephens Life*."



100TH

Anniversary of Stephens' "Stop Day," (the official reading day before the start of Finals Week). First celebrated on April 1, 1913, "Stop Day" began with a group of students who played hooky and went swimming in Rollins Spring. Then-president James Madison Wood joined the rebellious students for a picnic after learning of their antics. Thus, the birth of a Stephens tradition!

Planning Amazing Summer Events



Summer is just around the corner, and with it comes all sorts of parties, weddings and other celebrations.

If you have the chance to plan an amazing event this year, here are a few things you should keep in mind:

- Determine the goals of the event and refer back to them throughout the entire planning process as you're making decisions. For instance, are you trying to raise money for an organization? If so, keep a close eye on your event budget and cut unnecessary purchases, such as too many decorations. If your event costs come in lower than your budget, donate the balance to the organization. By referring back to goals and prioritizing your needs and wants, you can often solve problems easily if you get stuck.
- Tie your event to a theme. By embracing the theme's idea and designing your event around it, you can actually save money. By keeping all possibilities open, you can get overwhelmed and lose sight of your original goals. Themes tend to keep us on track and can streamline the decision-making process. Plus, themes are fun and can be re-used. Yes, it is OK to re-use a theme for different audiences (although if you have the same audience for different events, you probably want to change it up a bit).
- When planning your event, think about your guests and what they will experience from the second they receive the invitations to the last thing they do before they leave the event. Walk in the shoes of your audience. By anticipating what they will experience, you can make changes and avoid problems before guests start arriving.
- Tents are not necessarily cheaper than hosting an event in a permanent venue. It is possible to save money by having your event outdoors in a tent, but remember there will likely be add-ons you might not expect. For example, if you are planning a wedding, keep in mind the weather might not cooperate. If you need to put sides on the tent or use heaters or fans, there are going to be additional charges. Adding a dance floor or staging will also tack on additional costs. Tented events can be beautiful as long as you're aware of the potential price tag.
- When the event is over, make notes about what went well and what didn't while it's still fresh in your mind. Write down some things you should do differently next time. By remembering what to do and not to do, you can save yourself some heartache and a few pennies on your next planning adventure.

Planning personal events can be exciting, but we at Stephens know it's also a thriving industry. According to the U.S. Bureau of Labor Statistics, event and convention planning is one of the fastest-growing professions in the country. That provides tremendous opportunities for new college graduates.

In an effort to embrace this trend, the School of Organizational Leadership and Strategic Communication is launching an Event and Convention Management degree this fall.

Experiential education grounded in theory is a distinctive niche at Stephens College. Immediately upon entering the program, our students will be exposed to community events and will be able to work directly with professionals to help in the planning process. We will also encourage collaboration across campus, so our students can offer their event planning skills to other departments.

We are thrilled to integrate this degree into the School of Organizational Leadership and Strategic Communication and are excited about the program's potential!

—Cindy Hazelrigg
Stephens College Instructor,
Special Events Management

Test Your Stephens IQ

This year marks Stephens College's 180th anniversary. How much do you know about her?

Test your knowledge of all things Stephens.

1. The Okoboji Summer Theatre in Spirit Lake, Iowa, is located on the site of a former what?

- a. Hospital
- b. Tobacco barn
- c. Haunted house
- d. Airplane hangar

2. Which young talent can credit **Judy Doyen Taylor '73** for helping launch her career in show biz?

- a. Taylor Swift
- b. Stephanie Beatriz
- c. Selena Gomez
- d. Kristen Stewart



3. What instrument did journalist **Paula Zahn '78** play while attending Stephens?

- a. Flute
- b. Harp
- c. Cello
- d. Banjo



4. What radio station did Stephens launch in 1925?

- a. KWWC
- b. KFRU
- c. KBIA
- d. KCAT

5. Which pets are not allowed at Stephens College?

- a. Rats
- b. Sugar gliders
- c. Lizards
- d. None of the above



6. What does "Sursum" mean?

- a. Above and beyond
- b. Onward and upward
- c. Inward and outward
- d. From side to side

7. Which actress praised former Stephens President James Madison Wood for being her mentor?

- a. Maude Adams
- b. Carrie Nye
- c. Joan Crawford
- d. Dawn Wells

8. What is the name of Stephens' equestrian riding club?

- a. Susie's Sidesaddle Club
- b. Prince of Wales Club
- c. English Riding Club
- d. Stephens Equestrian Club



9. In the 1940s and '50s, Stephens fashion design students worked with the Butterick Company to feature their collections. What was the name of the student collections?

- a. "Susie Stephens"
- b. "Stephens Stars"
- c. "Stephens Fashions"
- d. "Stephens at Butterick"

10. Which campus spook thrills ghost-hunters every Halloween?

- a. The Ghost of Susie
- b. The Ghost of Firestone Baars Chapel
- c. The Ghost of Senior Hall
- d. The Ghost of Lela Raney Wood



Extra Credit

What is the name of the student in the ghost legend?

- a. Lela Raney Wood
- b. Beth Adams
- c. Sarah June Wheeler
- d. Susie Raney

Quiz page designed by **Anna LeRoy '13**, who is majoring in Graphic Design with a minor in Business Administration.

Answers: 1. D - Grinnell College converted the old hangar into a theatre in 1953. Stephens opened its first season there five years later. / 2. C - Selena Gomez, although we don't blame you if you recognized and selected Stephanie Beatriz's name. The Stephens alumna guest-starred on ABC's *Modern Family* this year. / 3. C - Zahn, who has worked for CBS *Evening News*, ABC's *Good Morning America* and CNN, attended Stephens on a cello scholarship. / 4. B - KFRU, which is now the call letters of a local Columbia station. Our current station is KWWC. / 5. D - None of the above in addition to dogs and cats, mice, gerbils, sugar gliders, lizards and birds are allowed on Stephens College's pet-friendly campus. (No snakes, though). / 6. B - "Sursum" means "onward and upward" and is embodied in a bronze statue on Journey Plaza. / 7. C - Although Crawford did not complete Stephens in her autobiography, she praised Wood for teaching her valuable life lessons. / 8. B - Prince of Wales is the country's oldest continually active riding club. / 9. A - "Susie Stephens" It was reported that in 1951 "Susie Stephens" styles were among the 10 best-selling Butterick patterns. / 10. C - The Ghost of Senior Hall is said to be a Stephens College student who committed suicide after caring for and falling in love with a Civil War soldier who was killed. / Extra Credit: C - The student's name was Sarah June Wheeler.



Farm Fresh

Heather Hunter '89, co-founder and co-director of Quarry Farmers & Ranchers Market, offers suggestions for shopping your local farmers market.



Want the satisfaction of knowing exactly where and how your food was produced? Take a trip to your local farmers market, where you'll find the freshest produce, eggs, meat and more!

"I promise it will taste amazing, and you'll never be able to eat conventionally raised eggs, chicken, meat or produce again," says **Heather Hunter '89**, the co-founder and co-director of Quarry Farmers & Ranchers Market (quarryfarmersmarket.com) in San Antonio.

She directs the successful farmers market with her husband, David Lent, and makes and sells her own all-natural, small-batch granola under the name of Cowgirl Granola (www.cowgirlgranola.com). She also has a food blog, The Cowgirl Gourmet" (www.thecowgirlgourmet.blogspot.com), featuring mostly healthy recipes inspired by what's available at the farmers market.

Farmers of small operations put in long, hard days to feed the animals; collect and clean the eggs; water, weed and harvest the crops; and bake or cook, Hunter says.

"You are giving your money directly to the people who raised the food you're about to eat," Hunter says. "While their prices might be a bit higher than at a chain store, you know your food was raised with compassion, integrity and care, and you are helping support something they are passionate about—food."

Hunter shares some tips for getting the most out of your visit to the farmers market.

Farmers Market Tips:

Shop at markets open exclusively to "growers and producers." That way, you won't be fooled into buying produce grown out of state. After all, you can get that stuff at the grocery store.

Arrive early and be prepared. Shop early to ensure the best selection or risk missing out on favorites like asparagus, strawberries, purple carrots and fennel that tend to sell out quickly. Bring reusable shopping bags, have cash in small bills, and consider having a cooler in your car for the ride home.

Walk around first to see what's available. Each farm has its own specialties, so listen to what people are talking about and buying. Don't be afraid to ask questions, talk to the farmers or to other shoppers.

Focus on "local" and "sustainable" and not "organic." The produce is grown locally,



Heather Hunter '89, co-founder and co-director of Quarry Farmers & Ranchers Market, is pictured with her cousin's son, Hudson Moore, one of her favorite farmers market helpers who loves to come to the market and be a part of the scene.

Since its founding in 2011, the Quarry Farmers & Ranchers Market, has been held every Sunday year-round in San Antonio. It has grown to feature a well-curated collection of 30 farmers, ranchers and artisan food producers. In addition to an international food scene, the market features a different local performer each week who entertains shoppers with homegrown music.

so the nutritional value is higher since it was picked, at most, 24 hours earlier. It lasts a lot longer as well. Remember that farm families eat their own products, too, so they go above and beyond to protect their crops using healthy, safe practices. The USDA process for becoming "certified organic" is expensive; many farmers practice the same process but don't pay for the certification.

Be flexible. What's there is what's in season and local. If you are unfamiliar with something, ask how to prepare it and how it was produced.

Buy pastured eggs and chicken, and grass-fed beef. Farmers markets aren't limited to just-picked produce; you'll find a full range of farm products that taste better than store-bought and pack a greater nutritional punch.

Bring the kids. The market offers valuable lessons in where food comes from. Have picky eaters? Let them pick out one item

a week to cook for the family. Many farms welcome visitors, so also ask about taking the family for a farm tour.

Always try something new. Try the prepared foods, artisan breads, gourmet spreads, granola and other specialty items. Say "yes" to samples and you may find items that taste much better than standard store-bought—and it's certainly easier than making them yourself!

Enjoy the environment. Relax, bring the dog, sip on a beverage, enjoy a snack or a meal, and make new friends. Be part of a growing group of people who support the local food movement and appreciate the quality of life, harmony and less impact on the environment it brings.

Just want to socialize? Arrive mid-morning when the crowds and energy are peaking. If you have enjoyed something you bought in the past, be sure to stop and thank the farmer, rancher or producer you bought it from.



Support Small Farmers

If you like a particular farmer or rancher, ask if she/he offers a Community Supported Agriculture (CSA) program and buy a share. CSAs help farmers plan their production and provides you with a regularly scheduled basket of goods. You may even be invited to work on the farm—giving you and your family a deeper appreciation of where your food comes from.



Summer Salmon & Succotash

Easy and elegant recipes for your summer table.

Before we know it, summer will deliver its abundance of fresh vegetables and fruits—from sweet corn and tomatoes to peppers and fresh-shell beans—all readily available around the country.

Chef Samantha Enzmann '90 of The Mercantile in Atlanta suggests a delicious combination of roasted salmon and butterbean succotash—easy elegance for a summer evening!

Roasted Salmon with Butterbean Succotash

Serves 4

Ingredients:

- 4 6-ounce center cut wild salmon filets, skin on
- Salt and pepper to taste
- 1 teaspoon brown sugar
- ½ teaspoon cornstarch
- 2 teaspoons Irish whiskey (Bushmill's preferred)
- ½ teaspoon brown sugar
- ½ teaspoon Dijon mustard
- 1 ½ tablespoons neutral flavored oil
(i.e. safflower, grapeseed or canola)
- 12 small thyme sprigs
- 1 lemon, sliced in thin rounds

Directions:

Pre-heat oven to 300° F.

On the stove top, pre-heat an oven-safe, non-stick skillet on simmer. In a small bowl, combine the salt and pepper, brown sugar and cornstarch. Sprinkle onto salmon, then rub into flesh of fish.

In another bowl, combine the whiskey, sugar and Dijon mustard and set aside.

Turn the heat to medium high in the pre-heating skillet, add the oil and allow to heat through. The oil should shimmer to let you know the heat is high enough.



Place the salmon filets flesh side down around the sides of the pan, and cook for at least two minutes, then flip the salmon over so that the skin side is down in the skillet. Brush the tops of the salmon filets with the whiskey mixture, and top with three sprigs of thyme and a lemon slice.

Place skillet into the oven and cook until salmon reads 125° F in the thickest portion of the fish, about eight minutes. Serve on individual plates atop succotash.

Butterbean Succotash

Serves 4 to 6

Ingredients:

½ pound of fresh-shelled butterbeans, blanched for five minutes and cooled in ice bath, then drained
 2 ears of corn, shucked and kernels removed
 ½ shallot, diced
 1 teaspoon olive oil
 2 medium red vine-ripened tomatoes, cored and chopped medium dice
 2 tablespoons basil leaves, torn
 1 tablespoon mint leaves, torn
 1 tablespoon parsley leaves, chopped
 ½ teaspoon oregano or marjoram leaves
 Salt and pepper to taste
 Drizzle of extra virgin olive oil, to taste

Directions:

Combine beans, corn and shallot together in a bowl.

On the stove top, heat a non-stick skillet over medium high heat, and add the olive oil and heat through. Once the oil is hot, add the butterbeans, corn and shallot. Increase the heat to high and sauté for three minutes. Remove from the heat, and place in a bowl used prior to cooking. Allow to cool for 10 minutes. Add the tomato and the fresh herbs. Toss to coat, then season with salt and pepper. Taste. Drizzle with extra virgin olive oil, and taste again to adjust seasonings if necessary.

Can be served room temperature or chilled.



Wine Pairing

Bliss Family Vineyards Pinot Noir Mendocino, California. (www.blissvineyard.com)

—As recommended by Janea Rae Boyles, a first-level sommelier and Enzmann's business partner.



Photo by Susan Scarbrough

“The recipe is straightforward, healthy and the flavors complement each other well. My interpretation of succotash plays on my Southern roots but does not contain squash. My Southern twist is the use of butterbeans. Whole herbs apply to my interpretation of salads; I have lots of influences: Southeast Asian, Italian and French Provencal cooking. Fresh herbs reduce the amount of salt needed in recipes and impart amazing fresh flavors.”

—Samantha Enzmann '90

Samantha Enzmann '90 is the owner and chef at The Mercantile (www.themercantileatl.com) in Atlanta, a specialty grocer that offers freshly prepared daily meals with a focus on seasonal availability and sustainability. She has appeared on CNN for her expertise and also teaches at the Salud! Cooking and Lifestyle School for Whole Foods Market.

Enzmann is a graduate of Western Culinary Le Cordon Bleu in Portland and has received additional training at the Culinary Institute of America in Napa Valley, Calif. She also has studied specialty retailing with the National Association for the Specialty Food Trade.

SPRING CLEANING, INSIDE AND OUT

Refresh yourself through exercise and meditation.



Punxsutawney Phil may have gotten it wrong again this year, but one of these days—wherever you happen to live—the days will grow longer, the temperatures will get warmer, and the first sprouts of spring will peek out from the muddy earth.

And whether you live in the desert of sunny Arizona, or in the wilds of the frozen North, that means it's time to open the windows, clear out the clutter, and rake out the gardens.

This year, try adding another kind of spring ritual to your calendar—one that refreshes and restores your health, attitude and peace of mind. ...

Embrace the season of renewal, inside and out.

Here's how:

LET'S GET PHYSICAL

If unpacking mental baggage sounds psychologically exhausting, you're in luck.

"In psychology, we know what makes the brain work more effectively, and it's mostly physical things," says Dr. Gina Sanders, director of counseling at Stephens College's Health and Wellness Center. "Research shows exercise helps calm the mind, reduces stress and helps you think more clearly."

No time for the gym? No problem. Just 10 minutes of movement can help on the mental battlefield, Sanders says.

"Step away from the computer and take a walk," she suggests.

One of the most important activities you can do doesn't require any work.

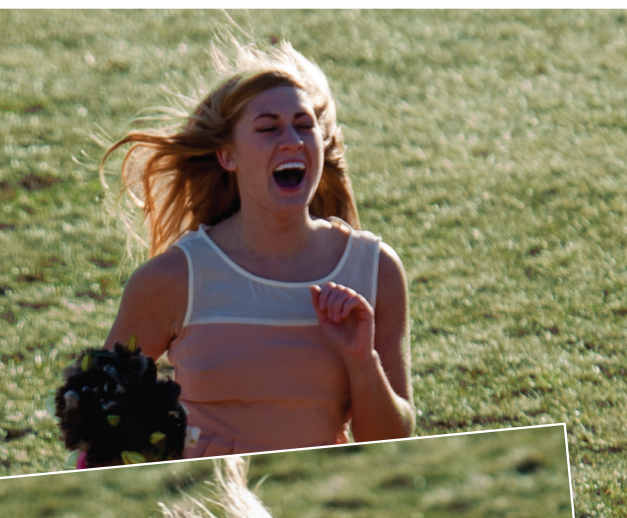
"If your mind is cluttered and all over the place, ask yourself whether you're getting enough sleep," Sanders says.

She suggests getting about eight hours a night.

If you can't stop worrying about something, ask yourself whether you can control it. If not, Sanders says, let it go.

That goes for forgiveness, too.

"If you have forgiveness issues, deal with them and move on; otherwise, it will make for bigger cobwebs in the future," she says.



Pictured: Christie Lee '13/photos by L.G. Patterson



MEDITATION STATION

Forget all of those energy drinks and pills that promise a healthier, more productive you. Turns out, you already have what you need to dramatically improve your well-being: Your brain. With a little focus, you can improve sleep, memory, productivity and happiness while decreasing stress and pain.

Sound too good to be true? Scientific studies have repeatedly proven meditation can have physical benefits, **Katrina Everhart '83** writes in the chapter she contributed to the 2012 best seller "The Wellness Code."

Over time, meditation causes the cortex—the area in the brain responsible for higher mental functions—to thicken, which increases a person's capacity to learn, remember and even control disease.

But even short meditation sessions can have physical benefits. Everhart suggests starting with just three-minute intervals in the morning or evening.

Any additional time provides additional benefits, Everhart says. Here's what happens to your body the longer you meditate:

- At 3 minutes: Circulation and blood pressure improve.
- At 5 minutes: Breathing changes.
- At 11 minutes: Glandular systems change, lowering stress.
- At 22 minutes: Brain begins to make new, healing connections.
- At 31 minutes: Glands, lungs, blood pressure and mind have synced together.
- At 62 minutes: Cortex thickens.

If you can't spend an hour a day meditating, go for shorter, frequent intervals, Everhart says.

Need help getting started? Follow these easy steps:

Shabad Kriya (to improve sleep)

Sit in an easy pose on the floor or in a straight-back chair. Place your right hand inside your left with your thumbs touching. Inhale in four short sniffs through the nose, mentally repeating "Sa, Ta, Na, Ma." Hold your breath and mentally repeat the mantra four times. Then, exhale in two equal breaths, mentally saying Wahe Guru (it means "ecstasy"—which is what you'll feel when you release your breath).

Kirtan Kriya (to improve memory)

Sit in an easy pose on the floor or in a straight-back chair. Rest your hands on your knees with your palms up. Repeat the words "Sa, Ta, Na, Ma," tapping one finger to your thumb for each sound.

Does meditation sound like a time luxury you can't afford? It's not, Everhart says. If you suffer from sleep deprivation, stress, poor health, or memory or production problems, consider meditation a necessity.

ATTITUDE OF GRATITUDE

When you're opening your windows and letting in the spring-time air, open your mind to some fresh new routines, too. If nothing else, count your blessings, Sanders says.

"Force yourself to name five things you're grateful for in your life," she advises. "It's hard to continue being negative if you're forcing yourself to think of the things you appreciate in your life."

FRESH LOOKS FOR SPRING FACES

SPRING MAKEUP TRENDS FROM LINDA DAUGHERTY SAUNDERS '81 AND HER LANCÔME USA EXPERTS.



Pictured above (left): Emily Wagner-Davis '14 is wearing Lancôme Paris Artliner eyeliner in royal blue.



Middle: Jenny Martin '16 is wearing Madame Tulipe lip color from the Lancôme Paris Rouge in Love Collection.



Right: Becky Saunders '15 shows off a full set of lashes complemented by Lancôme Paris Color Design eye-brightener and shadow from the Sienna Sultry set. (Becky is the daughter of Linda Daugherty Saunders '81.)



Blue eyes, red lips, full lashes—some of your favorite looks from “back in the day” are hot again this spring!

But don't pull out your blue eye shadow circa 1985 just yet; today's looks flatter in new ways.

Linda Daugherty Saunders '81, an account director for Lancôme USA, and her team of makeup experts are here to help.

Make Your Brown Eyes Blue: If you want to wear a blue hue at work, apply a softer shade such as navy—which gives a pop of color and brightens the whites of the eyes, according to Carin Gustavson, director of makeup artistry at Lancôme. Save brighter shades, such as teal or electric blue, for weekends and evenings. For a modern look, keep the rest of your makeup monochromatic.

Pucker Up: If you're going to sport the bright red lips that emerged as a trend on the Spring 2013 runways, keep your skin fresh and dewy with minimal makeup on your eyes and a soft, contoured cheek. The idea is to put the spotlight on your lips.

Flatter Your Flutter: Full lashes are always in style. To maximize the look of your lashes, curl, prime and define! Curling opens up the eyes and makes sure all of the lashes are lifted for maximum mascara application. Using a lash primer not only boosts the volume of your lashes prior to mascara application (think applying mousse to hair) but it gives long-term conditioning benefits for healthier lashes. Define your lashes by wiggling the mascara brush back and forth at the base of the lash—that creates volume at the base and adds definition to the eye.

All in the Details

Songwriter **Helen Lewis Moore '77** tells moving stories with her band, Queen of Hearts.

On a Friday morning in early February, **Helen Lewis Moore '77** is gearing up for back-to-back afternoon songwriting workshops with Stephens students. The next night, she and her band, Queen of Hearts, will entertain a Kimball Ballroom crowd before heading back to Nashville, where she and her fellow Queens are regular performers at the Bluebird Café.

But first, she takes a quick trip down memory lane while sitting in the Oberdorfer Alumnae Welcome Center in Lela Raney Wood Hall, thumbing through the 1977 *Stephensophia* before landing on a photo of **Lesley Panettiere Vogel '77**.

That's Hayden Panettiere's mom, Moore says, pointing to a raven-haired beauty in a theatre photo. Panettiere, of course, is the star of the show "Nashville," which Moore calls home.

She, too, was an aspiring actress when she attended Stephens. But Moore later discovered a talent for telling stories. Sometimes heart-wrenching, sometimes hilarious, but always truthful, those stories make her the ultimate songwriter—her songs transport, inspire, encourage.

"I can't draw a stick person but what I can do is paint a picture of what's moving me," she says.

The things that move Moore are oftentimes things many of us overlook. The way a young boy checks his wristwatch while waiting for the bus—a scene captured in "Harold," the title track of Moore's second solo album—or the way the light hits the floor when residents are being wheeled into the commons area of nursing homes, like the ones where Moore has volunteered for more than two decades.

"Life is in those details," she says.

What makes Moore unusually gifted, though, is her ability not just to make us grab a tissue, but to make us laugh. At the world. At her. At ourselves.

She sings about the life that happens after the fairytale wedding. She raps about a chauvinistic society that sets unrealistic standards for women.

"There's nothing funnier than the truth," she says. "Or more ironic."

And she knows her songs peel back curtains that sometimes protect us from ugly truths. "I'm acutely aware of things, so I have to be careful where I step," she says. "When I'm addressing sensitive subjects, I try not to make people uncomfortable. I want to offer a glimmer of hope. In tongue-in-cheek, there are lessons to be learned."

And she knows when she's gotten across to her listeners.

"I can see the look on someone's face when I'm singing and there's a connection—they know exactly what I'm talking about. That makes me feel good about being a spokesperson for those emotions."

Moore relocated to Nashville after an acting, modeling and singing career in New York, where she moved two years after graduating from Stephens. In her late 20s, Moore realized she did not enjoy traveling for the acting gigs she was landing.

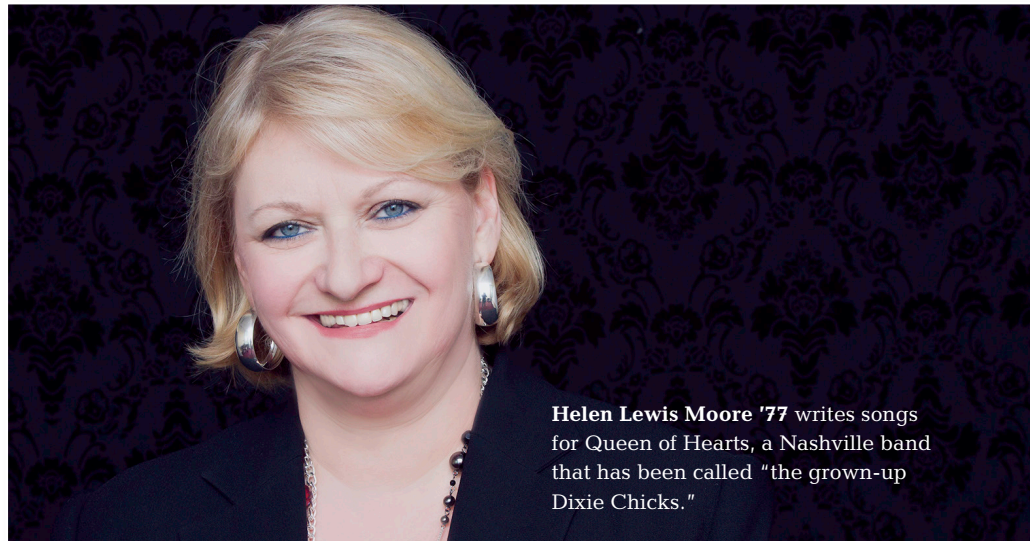
She tried her hand at a one-woman show, which wasn't picked up but did attract the attention of a local musician. Moore would go on to join a band and spend three years performing around New York.

"My dream was to go to Nashville," she recalls.

She and her husband decided to make it a reality when their son turned 1 in 1990.

Moore has enjoyed steady success there since. One of her songs, "Pick a Lane," was recorded by Janie Fricke and another, "Life is Good," was considered by country superstar Alan Jackson before Moore eventually recorded it with Queen of Hearts on its debut album in 2002. The group has since made two additional records, including "No Preservations" in 2010. It is working on a fourth.

"I feel very fortunate that I found a place like Nashville, where I can live among songwriters who understand what I do," Moore says of her career. "To be respected by my songwriting peers—such an amazing group—is such a great experience for me. I'm fortunate that when I write a song, it has a home. I'll never take that for granted."



Helen Lewis Moore '77 writes songs for Queen of Hearts, a Nashville band that has been called "the grown-up Dixie Chicks."

A Passion for Play

Mara McEwin '95 and Emily Bunning '95 combined their unique talents to co-found Treehouse Shakers, a not-for-profit theatre in New York.



"Let's Talk About IT!" / photo by Dan Ozminkowski



"Coyote's Dance" / photo by Mercedes McAndrew

When the baby chick breaks away from its oversized egg, children in the audience are captivated. When the gaggle of dancing chicks comes on stage, it evokes giggles. And by the time a life-sized calf puppet strolls by, the young audience is literally squealing with delight.

This is "Hatched," the latest creation by **Mara McEwin '95**. The 12th original production from Treehouse Shakers in New York, "Hatched" combines puppetry, dance and music to create a theatrical experience for young people that critics are raving about.

Since 1997, McEwin and fellow Stephens alumna **Emily Bunning '95**, have been entertaining audiences with innovative stories and complex dance movements. McEwin is the writer; Bunning is the choreographer; and the two co-founders have turned their individual passions into a successful not-for-profit dance and theatre company.

In addition to "Hatched," intended for children up to age 6, the company is currently offering four other original performances. "Coyote's Dance" leads audiences into the remarkable world of Coyote, the infamous mischief-maker from Native American

cultures. "Desert Travels" introduces young audiences to life in the Middle East. "Animal Rhythms" is their longest-running performance, based on folktales from West Africa, and "Let's Talk About IT!" explores teenage topics by meshing pop culture, real-life teen-filmed interviews, dance and world folklore.

McEwin and Bunning, who grew up together in Wyoming, shared their experiences and insights with us at *Beyond Stephens*.

BEYOND STEPHENS: You were childhood friends who attended an art class together on Saturdays. Tell me a little more about that.

EMILY BUNNING: Mara and I have known each other our whole lives. Our parents were artists and so was my great aunt, Susie. My grandmother and Mara's mom thought it would be a great idea for us girls to have art classes at Susie's house on Saturdays. It gave us kids (Mara, myself and my sister) a chance to spend time together and learn pottery, painting and other artistic mediums. We would do our project and then have a great lunch that my grandma and Susie would make.

BEYOND STEPHENS: How did the two of you hear about and ultimately decide to attend Stephens?

MARA MCEWIN: We both attended Perry-Mansfield, a beautiful outdoor performing arts camp, when we were 15; Emily went for dance, and I attended for theatre. At the time, Stephens College owned the camp. While there, we were approached by **Richard Blomgren '77**, who was the very dynamic head of the theatre department at Stephens. He enthusiastically told us all about Stephens. He also offered us both scholarships. I never applied to another college. Stephens sounded so perfect for what I had wanted in a college community (and it was!).

EMILY BUNNING: We attended Perry-Mansfield together in the summer before 10th grade. ... We both had magical, life-changing experiences and met amazing other campers. I still remember the very cool college students and the choreography class with Kay Henderson. From that point on, we had Stephens admissions counselors. I looked at other schools, but in the end, I chose Stephens because of the great dance department, even though I wasn't sure I'd be a dance major yet.

BEYOND STEPHENS: Mara, as a storyteller, what courses or experiences at Stephens have a lasting impact on you?

MARA McEWIN: I was planning on opening my own theatre, knew I wanted to make it work, and hoped to be an actor. It was really my theatre professor Addison Myers who continually encouraged me to move to New York City. He gave me my first subway token, taped to a note, and told me the token was for my first ride in the city. Addison, during our theatre history class, opened my eyes to the incredible world (both past and present) of theatre that was happening on the Lower East Side. And the Lower East Side is where my acting career truly began. When I first moved to the city, I was a part of a group of artists, performers, producers, and directors who were making creative work in any way possible downtown. In one of our group meetings, I was sitting next to none other than Laura Simms. Laura is considered one of the legends in the storytelling community. I needed a job and soon became her assistant and story transcriber. Even though I was primarily pursuing

acting, Laura encouraged me to become a storyteller and opened many doors for me in the early days of my career. Storytelling became my day job, and acting and Treehouse Shakers was my artistic job.

BEYOND STEPHENS: Emily, same question: What experiences at Stephens shaped your career?

EMILY BUNNING: I loved my choreography classes with both Kay Henderson and Janice Dulak. Those two women are why I am a dancer and choreographer today. They were both so professional, dedicated, disciplined, and encouraging of careers in the arts. I also got so much from being a member of Group E, the improv dance group that Janice led. I also feel that my time as a member of Searcy and Wood Hall shaped my identity as a strong, smart woman and artist.

BEYOND STEPHENS: You created a show together in college. Tell me about that.

MARA McEWIN: We made a show called "Women's Work." It was a project I started

when I was seriously interested in solely becoming a director. Again, Addison Myers, who was also my directing teacher, was so incredibly encouraging. I collected and cut several poems from women poets from around the world, I asked many actors to be in the piece, and Emily created movement as their blocking. I also took visual slides from my mother's paintings to create the set. This was, I believe, in 1995. All the elements we use today were in that piece.

BEYOND STEPHENS: Treehouse Shakers came about in 1997 when you had an idea for a show. What goes into getting a theatre and dance company off the ground?

MARA McEWIN: It seems wild now to think we started a company without much of a plan, but we did. I had written a play in Santa Fe a year earlier, and that became our first script. We wove dance, theatre and live Djembe drumming into the piece. Hiring several Stephens graduates to help both on and off stage, we performed the piece at a small black box theater, Ensemble Theater, and had a wonderful turnout and response. We were hooked.

continued on next page



"Hatched," a production of Treehouse Shakers, which was co-founded by Mara McEwin '95 and Emily Bunning '95.

Photo by Christopher Duggan

EMILY BUNNING: Mara and I just decided that we wanted to do a collaborative production in New York. We both were performing with enough companies to have a sense of what needed to be done to make that possible. So we just did it, without thinking so much about the consequences.

BEYOND STEPHENS: How did the name "Treehouse Shakers" come about?

EMILY BUNNING: When we were at arts classes at Susie's house, we would often play in her backyard while our work was drying or cooking. Susie had a rickety, old treehouse. We would climb inside and do impromptu dance-plays. This would make the tree shake. So, when we were founding our company, we thought Treehouse Shakers would be a great name.

BEYOND STEPHENS: You've been creating dance-plays for young audiences since 1999. What goes into coming up with a production such as "Hatched" that combines theatre and dance and getting messages across to children?

EMILY BUNNING: Our work for young audiences really began with making shows that we could travel on the subway with the set and costumes. We were very creative with the amount of props we would use. Often, we use dance instead of a literal prop. "Hatched" aside, the props and interactive components are often somewhat abstract. We really rely on and encourage the imagination of our audiences. We believe

in making quality dance-plays for young audiences that are not spoon-fed or talking down to the kids.

MARA McEWIN: Regarding "Hatched," I wanted to make a "baby drama." These pieces are typically created for 18-24 months and are really big in the more artistically supported countries such as Europe, and parts of Canada. I wanted to be the one to bring the genre to America. I created "Hatched" to be for babies, toddlers and preschoolers, and eventually expanded to 6 years old to include siblings. James Packard, the theater manager at Long Island Children's Museum, immediately jumped on board with the concept. He generously invited our company to come in for several showings to test scenes and our newly created puppets on LICM's audience members. I felt that a piece about baby farm animals would be the best way to create an American "Baby Drama" and would also allow me to finally delve further into the world of puppet making. The piece is part farm, part touch and the first introduction into live theatre. I was aiming for extremely high quality aesthetics and the best that Treehouse Shakers could produce. The piece has movement, live music, beautiful puppets and set, and is a wonderful story. When "Hatched" premiered in May 2012, it sold out before we even had a chance to publicize. It has been a hit ever since, and we continue to develop and shape it.

BEYOND STEPHENS: You both have successfully turned unique passions into a

business. What advice would you give other women who are interested in turning arts-related passions into viable businesses?

MARA McEWIN: If you are dedicated and passionate, you can do anything. It takes years of sacrifice, hard work and, sometimes, failure. We are lucky in that we have each other to rely on as business partners, collaborating creative partners, and as friends. We have created our own areas of expertise in the business over the years out of the necessity to survive as an arts company. I recommend keeping the doors of opportunity open. Network, network and network some more. Stephens College offers one of the best alumnae networks of any college. Once you graduate, stay connected with your classmates, your professors, your alumnae chapters. You never know when the door will open to bigger successes. And then, you have to continue to work on perfecting your craft.

EMILY BUNNING: Almost daily I am amazed and proud that we have a business doing what we love. My advice would be to really believe in your success. I think if we were to do it again, we should get some business consulting and start applying for funding immediately. Mara and I are very lucky to have each other in this venture. We have had our struggles, but in the end, I think we have been so successful because we haven't been alone in the process.



Mara McEwin '95 and Emily Bunning '95 have been entertaining audiences with their original productions since 1997. *Photographs courtesy of Andrew Walker*

TREEHOUSE
SHAKERS

Find a Show Near You!

The Treehouse Shakers travel around the nation putting on performances. Find one near you at www.treehouseshakers.com.

MARCHING TOWARD Retirement

Professor Dr. Judith Clark has been a fixture at Stephens for 45 years.

Dr. Judith Clark's office in Dudley Hall is a gallery of interesting exhibits.

On the coffee table, bowls of candy—used to entice students to stop by—sit near a finger puppet of William Shakespeare and a rubber ducky wearing Queen Elizabeth's face. Hundreds and hundreds of books line the shelves behind her desk, while colorful banners hang from the ceiling.

These are belongings that have taken 45 years to accumulate. And they are what will bring Clark back to campus even after she retires.

"Some of these files should be in the Stephens Archives, so I need time to go through and identify them," says the petite woman with an infectious smile as she scans the shelves.

A fixture at Stephens, Clark begins her march toward retirement this summer when she hangs up her hat as a full-time faculty member.

Clark began teaching at Stephens in 1968 after earning a bachelor's degree from Lindenwood College, a women's school

at the time, and a master's degree from Kansas State Teacher's College in Emporia. She applied for several jobs and decided Stephens would be a perfect fit.

"I got lucky and got exactly the kind of job I wanted on my first try," she says.

Clark—who would later add a doctorate degree from Miami University in Oxford, Ohio—has taught countless composition, literature and English courses.

But her imprint on campus goes far beyond the classroom. She helped draft campus-wide faculty policies and has served as chairwoman of the Faculty Personnel Committee for decades. She helped develop a Women's Studies program and served as chair of the English/Creative Writing department for many years. She's been involved in Stephens' literary journal, *Harbinger*, and in the 1990s, founded Stephens' Sigma Tau Delta chapter. She's since been named "Outstanding Advisor" twice.



This fall, when she transitions to adjunct faculty status, Clark says teaching one class will be a luxury.

While she's looking forward to free time, Clark admits she'll miss her English/Creative Writing colleagues. "I'm fortunate to be in a department that has always had collegial and compatible people," she says. "We know individuals who write need an audience. We're a community of authors and readers."

REMEMBRANCES

'30s & '40s

Helen Rorabeck Riordan '31 of Traverse City, Mich.; Aug. 27, 2012. **Shirley Baughman O'Leary '33** of Box Elder, S.D.; Sept. 12, 2012. **Marion Hurst Hobbs '35** of Gilbert, Ariz.; Nov. 16, 2012. **Frances Mary Feeney Brown '36** of St. Petersburg, Fla.; Jan. 18, 2013. **Shirley Virginia Schmidt Hodgkin '36** of Delta, Colo.; Jan. 31, 2013. **Mary Huggins McBride '36** of Hillsboro, Ohio; Oct. 21, 2012. **Celia Mae Scott '36** of Redmond, Wash.; Feb. 2, 2013. **Madeline Flint Neiman '37** of Des Moines, Iowa; Nov. 24, 2012. **Edith Alcorn Peterson '37** of Town and Country, Mo.; Jan. 13, 2013. **Mary Appgar Sanford '37** of Jacksonville, Fla.; Nov. 5, 2012. **Margaret "Dolly" Guleke Ware '37** of Fort Worth, Texas; Sept. 22, 2012.

Edithann Rowe Janetski '38 of Great Falls, Mont.; Oct. 21, 2012. **Mary Kidd McCullough '38** of Leeds, Ala.; Sept. 10, 2012. **Dorothy Mercer Wenrick '38** of Claremont, Calif.; Nov. 11, 1995. **Mary Roth Riordan '38** of Grand Rapids, Mich.; Dec. 26, 2012. **Jane Watson Dooley '39** of Des Moines, Iowa; Feb. 1, 2013. **Caralee Laming Greene '39** of Overland Park, Kan.; Nov. 15, 2012. **Margaret Eades McKinney '39** of Evansville, Ind.; Oct. 9, 2012. **Lillian "Billie" Preysz Cunningham '40** of Myrtle Beach, S.C.; Nov. 10, 2012. **Mary Alice Conger O'Reilly '40** of Essex, Conn.; Jan. 18, 2013. **Margaret "Jane" Puterbaugh Smedley '40** of Centennial, Colo.; Nov. 29, 2012. **Peggy Pendleton Walton '40** of Everett, Wash.; Dec. 19, 2012. **Ruth Whitaker Sheppard '41** of Richardson, Texas; Sept. 7, 2012. **Mary**

Anderson Downey '42 of Ada, Mich.; Feb. 2, 2013. **Hansi Dunzelmann Orgain '42** of Clarksville, Tenn.; Dec. 5, 2012. **Lessye McMullen Sampson '42** of Madison, Miss.; Nov. 10, 2012. **Janice McDougal Smith '42** of Edgewater, N.J.; Oct. 12, 2012. **Margaret Peppers Ware '42** of Rockford, Ill.; Oct. 10, 2012. **Barbara Hunt Collie '43** of Neosho, Mo.; Sept. 4, 2012. **Dorothy Reed Doyle '43** of Belzoni, Miss.; Sept. 30, 2012. **Barbara Ann Todd Kingston '43** of Easton, Md.; Oct. 15, 2012. **Mary Ramsey Levey '43** of Mandeville, La.; Jan. 9, 2013. **Mary Nelle White Magill '43** of Atlanta; Sept. 19, 2012. **Barbara Budina Smith '43** of Richmond, Va.; Jan. 27, 2013. **Carolyn Flinn Swearingen '43** of Santa Fe, N.M.; Dec. 21, 2012. **Mary Bradley Hackney '44** of Odessa, Texas; Oct. 18, 2012.

continued on next page

The Many Facets of Nikki Krawitz

Stephens trustee Nikki Krawitz will retire as vice president for finance and administration of the University of Missouri System.

Maybe it was fate, but Nikki Krawitz can almost credit a chauvinistic attitude for having a hand in her second career, which led her to her current post of overseeing a \$2.7 billion budget at the four-campus University of Missouri System.

Krawitz, a member of the Stephens Board of Trustees, originally wanted to expand on her education background when her husband's work brought them to Columbia. She hoped to earn a doctorate in neuropsychology and wanted to research the relationship between emotional problems and learning challenges. After all, she'd spent the prior 10 years working with children with emotional and learning issues at schools in Illinois, Indiana and England.

The department chair of MU's program discouraged her, though, saying he was tired of the wives of faculty members populating the graduate programs.

Krawitz isn't the type of woman who sees obstacles. Instead, she looks for opportunities. And at the time, she noticed there was a shortage of certified public accountants.

So, Krawitz enrolled in the graduate-level accounting program at MU. After earning

a master's degree in accountancy, Krawitz expected to work as a CPA but found a different opportunity: A faculty position at Stephens. Krawitz went on to teach accounting, finance and operations management.

Early in her career, then-President Patsy Sampson tapped her to serve on a committee to help make operations more efficient. Later, she served on a committee to redesign general education requirements. Krawitz's leadership skills surfaced quickly and she was soon named associate dean of faculty. A couple of years later, she was named vice president of finance and administration.

The roles would prepare Krawitz when the UM System came calling with a position tailor-made for her. Again, she rose in the ranks and, after serving as controller, was tapped to fill the role of the system's top financial officer, a position she's held since 2002.

Krawitz officially steps down at the end of June. Don't envision her in a rocking chair just yet, though. She will remain active at Stephens and on other boards and she has a new to-do list that includes plenty of travel.



Can't Get Enough?

Find Class Notes and news about our Stephens Chapters around the nation.

www.stephens.edu/alumnae/notes

[from] Stephens

Latest News, Events & Info from Stephens College

Subscribe to our monthly enewsletter: Email us at alumnae@stephens.edu or call (573) 876-7110.

REMEMBRANCES

Carolyn Ann Visek Johnston '44 of Largo, Fla.; Sept. 20, 2012. **Mary Ruth Courteol Paine '44** of Seattle; Oct. 8, 2012. **Beatrice "Bea" Blue Sanders '44** of Houston; Jan. 10, 2013. **Frances Young Torbett '44** of Marietta, Ga.; Jan. 3, 2013. **Barbara Snyder Disser '45** of Fremont, Ind.; Aug. 21, 2012. **Noreen Myers Gann '45** of Kansas City, Mo.; Sept. 29, 2012. **Patricia "Pat" Berglund Rierson '45** of Boone, Iowa; Nov. 1, 2012. **Barbara Louise Hallis Shebek '45** of Phoenix; Oct. 10, 2012. **Anna Mae Britt Corrigan '46** of Coral Gables, Fla.; Sept. 26, 2012. **Jean Robinson Child '47** of St. Michaels, Md.; Sept. 26, 2012. **Nancy Grace Schulein Gillespie '47** of Spokane, Wash.; Feb. 2, 2013. **Patricia "Pat" Schaaf Lee Klueh '47** of Evansville, Ind.; Dec. 25, 2012. **Jean Bodin Ray '47** of Stone Mountain, Ga.; Feb. 4, 2013. **Alice Dewey**

Rehn '47 of Bellevue, Wash.; Dec. 31, 2012. **Colleen Barron Wolfe '47** of Charleston, W.Va.; Sept. 22, 2012. **Betty Callan Morgan '48** of Los Angeles; Oct. 19, 2012. **June Hardwick Voltz '48** of San Antonio; Dec. 18, 2012. **Marge Spinzig Fienup '49** of Chesterfield, Mo.; July 21, 2012. **Audrey Gayle Parsnick Graves '49** of Prescott, Ariz.; Nov. 8, 2012. **Betty Ann Dozier McMillan '49** of Cincinnati; Jan. 9, 2013.

'50s & '60s

Wiladine "Billi" Garrigan Gritzmaker '50 of Carlsbad, Calif.; Dec. 28, 2012. **Barbara Babcock Kewin '50** of Pittsford, N.Y.; Nov. 5, 2012. **Virginia Ann McClure '50** of Troy, Ohio; Dec. 24, 2012. **Mary Anne Floyd**

Rawlinson '50 of Stone Mountain, Ga.; Jan. 9, 2013. **Marybeth Page Wiggins '50** of Newburgh, Ind.; Sept. 2, 2012. **Barbara Darby Hornbuckle '51** of Kennesaw, Ga.; Sept. 10, 2012. **Betty Nan Levy Obermayer '51** of Arlington, Va.; Jan. 26, 2013. **Joan Smith Wendland '51** of Bay City, Minn.; Oct. 29, 2012. **Joan Elizabeth Auerbach Burroughs '52** of Indianapolis; Oct. 24, 2012. **Mary Alice McClelland Knudtson '52** of Goleta, Calif.; Jan. 7, 2013. **Patricia Louise Bornmann Newberry '52** of Tampa, Fla.; Sept. 18, 2012. **Joye Tinkham Patterson '52** of Columbia, Mo.; April 16, 2012. **Mary Zeagler Rish '52** of Decatur, Ga.; Dec. 11, 2012. **Dorothy Clark Evans Robinson '52** of Salinas, Calif.; Feb. 11, 2011. **Linda Bates Chisholm '53** of Sun City, Ariz.; April 27, 2012. **Georgia Owens Fry '53** of Dallas; April 20, 2012. **Janet Ann**

In Memory

Frances Gruppe Gates '46 championed Stephens' scholarships and alumnae programs.

Frances Gruppe Gates '46 of Lamar, Mo., passed away on Jan. 23, 2013. Gates served on the Stephens College Board of Curators for six years and, along with 36 other board members, pledged a \$2 million gift to Stephens as part of a \$3 million fundraising campaign in 1973. In 1971, she helped found the Alumnae Fund Board, which helped implement four-year alumnae scholarships. She also served on that board for six years. In 1978, Gates became director of alumnae programs at Stephens College, a role she served in for several years.

Gates received her associate of arts degree from Stephens and a bachelor's degree from Syracuse University, where she later became the first chairperson of the Syracuse University International Student Program. She was among the founders of the Syracuse World Affairs Council.

Gates volunteered with Meals on Wheels, the League of Women Voters and on the Manlius Pebble Hill County Day School's Board of Trustees.

She had fond memories of her years at Stephens, according to her daughter, **Beth Gates Jobs** '74.

"Mother spent her two years in Tower Hall and loved it there," Jobs says.

Gates also enjoyed the golf program and the aviation program, although she was not able to fly because of airsickness.

She is survived by four children, Jobs, **Katherine Gates O'Sullivan '76**, Christopher Gates and Karl Gates; and five grandchildren. She was preceded in death by her sister, **Elizabeth Gruppe Sotanski '49**.



“She remembered having to dress for dinner. In those days, hosiery was required, but in the war years, hosiery was not readily available. So women had kits, which they used to ‘paint’ a seam down the back of their legs.”

—**Beth Gates Jobs '74**

“Jan” Snick Sauers '53 of Leland, N.C.; Oct. 24, 2012. **Harriet Gibbon Langfeldt '55** of The Dalles, Ore.; Dec. 15, 2012. **Laura Yacomo Hargett '56** of Plano, Texas; Dec. 30, 2012. **Caryl Elaine Westdal Smith '56** of Orange, Calif.; Dec. 31, 2012. **JoAnn Morris Brown '57** of Aurora, Colo.; Jan. 23, 2013. **Patricia Folk '58** of Arvada, Colo.; Sept. 4, 2012. **Victoria Hakes Thoresen '58** of Port Clinton, Ohio; Jan. 18, 2013. **Judith Letcher Auidenberg '59** of Sikeston, Mo.; Sept. 19, 2012. **M. Elizabeth “Betty” Helmer Norris '59** of Mesa, Ariz.; Feb. 1, 2013. **Janice Louise Music Eichor '61** of Houston; Dec. 26, 2012. **Delores Ann Bond Morrow '61** of Rio Rancho, N.M.; Aug. 15, 2012. **Dagne Lindal Schoenbach '61** of St. Joseph, Mich.; June 12, 2012. **Marsha Rolf Sheets '62** of Fort Wayne, Ind.; Dec. 21, 2012. **Judi Jackson**

Hourigan '64 of Columbia, Mo.; Sept. 19, 2012. **Pamela Lynn Ellery '66** of Dewey, Ariz.; Feb. 24, 2012. **Carroll Eidson Hobbs '67** of Weatherford, Texas; Nov. 13, 2012. **Margaret Helen Nagle '69** of Houston; Aug. 15, 2012.

'70s & '80s

Lisan Elizabeth Scruggs '72 of Scottsdale, Ariz.; Sept. 15, 2012. **Anne Kassab Olive '79** of Joplin, Mo.; Dec. 31, 2012. **Holly Henson '82** of Danville, Ky.; May 27, 2012.

Former Employees of the College

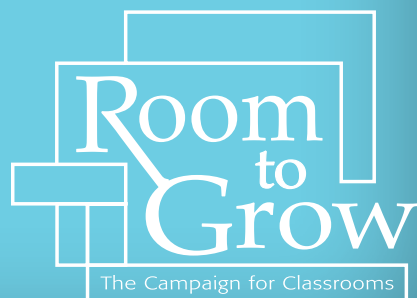
Betty Burns Dack of Columbia, Mo., Child Development department faculty member;

Dec. 29, 2012. **Eula May (Judy) Simmons Harold** of Columbia, Mo., chair of Stephens music program for 36 years; Aug. 13, 2012. **Dorothy Johnston** of Columbia, Mo., library staff member; Oct. 11, 2012. **Edna May Petty** of San Diego, Calif., former staff member; Sept. 20, 2012. **Herb Scott** of Columbia, Mo., former employee for 38 years and consultant for three years; Nov. 20, 2012.



Our teaching excellence hasn't changed, but our classrooms need to. Please consider a gift to the Room to Grow Campaign for Classrooms. Learn more and experience our progress at www.stephens.edu/roomtogrow.

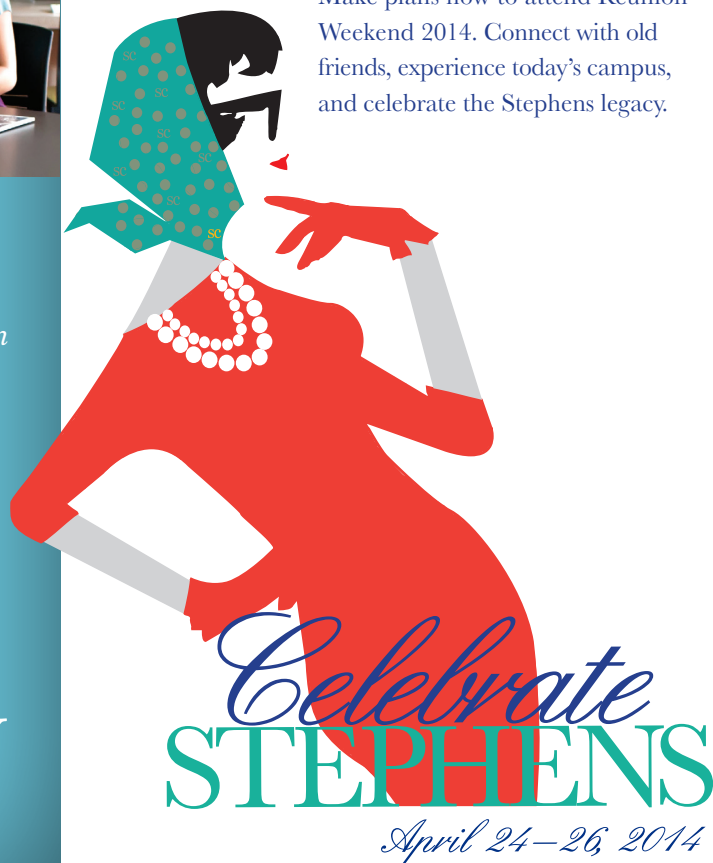
Contact:
Office of Philanthropy
(877) 876-7156
giving@stephens.edu
www.stephens.edu/roomtogrow



SAVE THE DATE

Reunion 2014

Make plans now to attend Reunion Weekend 2014. Connect with old friends, experience today's campus, and celebrate the Stephens legacy.



BECOME AN ALUM AGAIN WITH THE STEPHENS IDEAL GRANT

Stephens College is proud to offer all SC graduates the **Ideal Grant** as part of our ongoing commitment to lifelong learning.

Learn more about our graduate and online programs as well as grant opportunities at www.stephens.edu/idealgrant

or contact us at online@stephens.edu today.



Charitable Gift Annuities

There are many ways to give to Stephens. Some gifts have the advantage of providing you with lifetime income just as you provide Stephens with funds to further our mission. We pay you a fixed income in return for your gift, and you may enjoy several tax advantages, too. Give us a call to talk about your giving goals and options at (573) 876-7110. **Marissa Todd '10 M.B.A.** will be happy to assist you.

A Stephens Snapshot

It's changed names, sizes and themes over the decades, but Stephens' literary journal continues to provide students with real-world experience while letting the campus community show off its writing and design talents.

Stephens' literary magazine debuted in 1920 as *The Standard* and aimed to provide English students with an opportunity to be published. In 1962, it morphed into *Portfolio* and expanded to include art, photography and literary criticism. In the 1970s, the publication became *Narcissus* under the helm of Eleanor Bender, who was also owner, editor and publisher of the national poetry magazine *Open Places*. The literary journal became *Harbinger* in 1980.

Since 2009, adviser Kris Somerville has been helping students give the magazine a fresh look. That year, the journal itself became smaller but expanded to include more graphic elements. Each year since, the magazine's staff has added a design element, such as interior spot color or a block color page. This year, the edition will include some full-color pages.

"It's up to staff in terms of adding design elements to make it snazzy," Somerville says.

Students are in charge of the publication from solicitation to sales. In the fall, *Harbinger* staff members solicit poetry, short stories and non-fiction submissions from peers across campus. Unlike its earliest predecessor, entries aren't limited to English and Creative Writing students, but rather come from students across campus.

Then, the journal's student staff members are charged with the grueling task of deciding which works to accept and which to professionally reject.

During the spring semester, *Harbinger* becomes an official course for students. That's when student staff members begin editing the selected pieces and decide on a theme.

The latter can be challenging: The theme is supposed to tie all of the poetry, short stories and essays together.

Recent changes have paid off: *Harbinger* has won the Outstanding Literary Arts Journal Award from Sigma Tau Delta, the international English honor society, for three consecutive years.

The 2013 *Harbinger*, "Bombshell," is hot off the press and will be available for sale at Reunion Weekend. You can also view the covers and read excerpts at www.stephens.edu/harbinger.



1969 *Portfolio* staff: Jonna Skehan '67, Marsha DeGenaro Mercer '70, Genie Wing '68, Diann Deason Timms '70 and Laurie Tolleson '71.



Pictured (clockwise from left): 2012-2013 *Harbinger* Staff: Arianne Kobler '13, Emma Deutsch '13, Grace Pittman '13 (editor), Alexi Scharbach '14 and Amber Surdam '14.



Introducing the **SURSUM SOCIETY**

The Sursum Society for Philanthropy is a new society designed to celebrate those who support Stephens and her students, and to recognize their stewardship. This new society acknowledges the essential role that our alumnae and donors play in our ability to keep moving forward and celebrates the impact of their stewardship on the lives of current students and future generations.

Annual Giving, Loyalty Giving and **Lifetime Giving** will all be recognized as we thank those who have helped Stephens College move onward and upward through their generous and consistent support. Membership will also include an invitation to the Sursum Society gala to be held every April. To learn more, please contact the Office of Philanthropy at (877) 876-7156 or giving@stephens.edu.

ONWARD and UPWARD

In 2006, Stephens alumna **Nancy Fyfe Cardozier '45** created a life-sized bronze sculpture to embody the rich tradition of the College's *Ten Ideals*. Named Sursum!—Latin for “onward and upward,”—the sculpture stands at the center of the College's Journey Plaza.

Today Sursum! represents the best of Stephens College's rich traditions and engaged community. Located in the heart of the Stephens College campus, the sculpture serves as an inspiring reminder of the power of education to transform women's lives.

